

ONTARIO

MINISTRY OF THE ENVIRONMENT

# **EMERGENCY RESPONSE PLAN**

**MINISTRY OF THE ENVIRONMENT**

**APPROVED: DECEMBER 2005**

**UPDATED: DECEMBER 2006**

## PREFACE

The overall response structure for emergencies in Canada relies on the local municipality and on municipal authorities taking primary responsibility for public health and safety. Most emergencies are dealt with successfully at the local level through municipal emergency plans. Municipal plans assign response coordination for various types of events to appropriate municipal officials and provide for senior-level municipal officials to take charge of locally declared emergencies. Assistance to local-level emergencies from the Ministry of the Environment (MOE) and from other provincial and federal departments is often provided without necessarily elevating the event further. Nevertheless, ministries that provide assistance in this way might make use of their own emergency plan to facilitate a more formal or a structured response.

When an event escalates beyond the response capacity of local authorities, the Premier has the authority under the *Emergency Management and Civil Protection Act* to declare a provincial-level emergency. For such eventuality MOE may be required to deal with the environmental component of that emergency in a coordinated Government response. The MOE Emergency Response Plan is intended to facilitate the Ministry's response component to provincially declared emergencies where such events include components within MOE's mandate and where the Ministry can be of assistance. More specifically, the MOE Emergency Response Plan fulfills the requirements of the *Emergency Management and Civil Protection Act* and *Ontario Regulation 380/04* for the Minister of the Environment to develop an emergency response plan for specific types of emergencies as assigned by the Lieutenant Governor in Council. To this end, the primary purpose of this Plan is to establish a framework for a systematic and effective response to spill and drinking water emergencies that escalate to the level where MOE is asked or is required to intervene. However, given Ontario's regulatory regime that addresses the duties and responsibilities of those that may be involved in spill and drinking water events, MOE's response to such events that escalate to become an emergency will most likely be in addition to the response by the regulated party or in conjunction with other authorities. This Plan also establishes the framework for a response to other types of emergencies where MOE's support may be required.

A key component of the MOE Emergency Response Plan involves the activation of the Ministry Action Group (MAG) as MOE's senior-level decision-making body for coordinating and directing the Ministry's response to an emergency. Once activated for an emergency, the MAG becomes MOE's focal point for the Ministry's corporate-level decisions. Thus the flow of information within the Ministry related to MOE's participation in the response to an emergency must be channeled through the MAG.

The Deputy Minister may serve as the Executive Lead (or Chair) of the Ministry Action Group for complex emergencies or may delegate this role. Three Assistant Deputy Ministers (ADMs) have been identified to serve as the likely Executive Leads for specific types of emergencies, as follows:

ADM, Operations Division – spills

ADM, Drinking Water Management Division – drinking water

ADM, Corporate Management Division – continuity of operations

The Deputy Minister may make adjustments as required.

# **EMERGENCY RESPONSE PLAN**

**FOR**

**SPILL AND DRINKING WATER EMERGENCIES**

**AND OTHER**

**EMERGENCIES THAT REQUIRE A MINISTRY RESPONSE**

**MINISTRY OF THE ENVIRONMENT**

**APPROVED: DECEMBER 2005**

**UPDATED: DECEMBER 2006**



## PROCLAMATION

The Ministry of the Environment (MOE) Emergency Response Plan fulfills the requirement under the *Emergency Management and Civil Protection Act* and Ontario Regulation 380/04 for the Minister of the Environment to develop an emergency response plan for specific types of emergencies as assigned by the Lieutenant Governor in Council. This Plan is designed to establish a framework for a systematic and effective response to spill and drinking water emergencies as well as to other emergencies where Ministry response coordination or Ministry support is required.

The MOE Emergency Response Plan establishes a decision-making and response structure for environmental emergencies that require the Ministry's diverse expertise and direct participation in addition to the response by the regulated community and local authorities. The Plan builds on the Ministry's spill response and drinking water regulatory programs and their support mechanisms, and relies on the statutory duties imposed on the regulated community that may be involved in spill or drinking water events. In addition, the Plan recognizes the authority of the Ministry to deal with a pollution event when necessary.

The primary focus of this Emergency Response Plan is to create a Ministry response structure suitable to address spills to the natural environment and drinking water emergencies for which the Ministry has lead responsibility. This Plan will also be implemented to supplement other emergency or contingency plans for which other ministries or agencies at the provincial or federal level have the lead role, but where the MOE can serve in a support role.

This Plan has been approved by:

Original signed by:

Paavo Kivisto

\_\_\_\_\_  
Deputy Minister

Dated at Toronto: December 11, 2005

Original signed by:

Hon. Laurel Broten

\_\_\_\_\_  
Minister of the Environment

Dated at Toronto: January 25, 2006



# TABLE OF CONTENT

<u>CHAPTER</u>	<u>SECTION</u>	<u>TITLE</u>	<u>PAGE</u>
<b>1</b>		<b>INTRODUCTION</b>	<b>1</b>
<b>2</b>		<b>SCOPE AND APPLICATION</b>	<b>3</b>
	2.1	AUTHORITY	3
	2.2	PURPOSE AND LIMITATIONS	3
	2.3	PLAN OBJECTIVES	5
	2.4	ROLE OF MOE	6
	2.4.1	EMERGENCIES	6
	2.4.2	SPILLS	6
	2.4.3	DRINKING WATER EVENTS	7
	2.4.4	RELATED SUPPORT FUNCTIONS	8
	2.5	PLAN ACTIVATION	10
	2.5.1	PROVINCIAL-LEVEL EMERGENCY	11
	2.5.2	ALL OTHER EMERGENCIES	12
	2.5.3	RESPONSE COORDINATION WITH OTHERS	13
	2.6	RESPONSE ACTIONS AUTHORIZED	13
	2.7	PLAN TERMINATION	14
	2.8	ALERTING THE PUBLIC	14
	2.9	ADMINISTRATIVE MATTERS	14
	2.10	PROVINCIAL RESPONSE PERSPECTIVE	15
<b>3</b>		<b>MOE RESOURCES</b>	<b>17</b>
	3.1	SPILL RESPONSE PROGRAM	17
	3.1.1	SPILLS ACTION CENTRE	17
	3.1.2	FIELD ACTIVITY AND RESPONSE	18
	3.2	DRINKING WATER PROGRAM	20
	3.2.1	ADM/CHIEF DRINKING WATER INSPECTOR'S OFFICE	21
	3.2.2	SAFE DRINKING WATER BRANCH	22
	3.2.3	DRINKING WATER PROGRAM MANAGEMENT BRANCH	22
	3.2.4	EDUCATION AND OUTREACH BRANCH	22
	3.2.5	ROLE OF OTHER MOE DIVISIONS	22
	3.2.6	INVOLVEMENT OF LOCAL HEALTH UNITS	23
	3.3	OTHER MINISTRY RESOURCES	23
<b>4</b>		<b>MOE'S EMERGENCY RESPONSE STRUCTURE</b>	<b>25</b>
	4.1	EMERGENCY OPERATION CENTRE (EOC)	25
	4.1.1	OPERATIONS CYCLE	26
	4.2	MINISTRY ACTION GROUP (MAG)	27
	4.2.1	MAG COMPOSITION	28
	4.2.2	MAG ACTIVATION	29
	4.2.3	PRIMARY FUNCTIONS OF MAG MEMBERS	30
	4.3	REGIONAL ACTION GROUP (RAG)	33
	4.3.1	RAG COMPOSITION	34
	4.3.2	RAG ACTIVATION	35
	4.3.3	PRIMARY FUNCTIONS OF RAG MEMBERS	35
	4.4	PUBLIC INFORMATION	38
	4.5	CONCEPTUAL RESPONSE STRUCTURE - OVERVIEW	39
<b>SCHEMATICS</b>			
	1	EMERGENCY RESPONSE PERSPECTIVE	15
	2	PEOC - MOE-EMERGENCY OPERATIONS CENTRE - - LINKAGE	26
	3	CONCEPTUAL EMERGENCY RESPONSE STRUCTURE	40

Continued next page

## **TABLE OF CONTENT CONT'D**

---

<b>ANNEX A</b>	<b>ADMINISTRATIVE ELEMENTS OF THE MOE EMERGENCY RESPONSE PLAN</b>	<b>A - 1</b>
<b>ANNEX B</b>	<b>RESOURCES DIRECTORY FOR THE MOE EMERGENCY RESPONSE PLAN</b>	<b>B - 1</b>
<b>ANNEX C</b>	<b>EMERGENCY INFORMATION</b>	<b>C - 1</b>
<b>ANNEX D</b>	<b>SPILLS TO THE NATURAL ENVIRONMENT - RESPONSE ELEMENTS</b>	<b>D - 1</b>
<b>ANNEX E</b>	<b>DRINKING WATER EMERGENCIES - RESPONSE ELEMENTS</b>	<b>E - 1</b>
<b>ANNEX F</b>	<b>FOREIGN ANIMAL DISEASE - SPECIFIC RESPONSE ASPECTS</b>	<b>F - 1</b>
<b>ANNEX G</b>	<b>MOE'S SUPPORT – PROV. EMERGENCY RESPONSE PLAN</b>	<b>G - 1</b>
<b>ANNEX H</b>	<b>MOE'S SUPPORT – PROV. NUCLEAR EMERGENCY RESPONSE PLAN</b>	<b>H - 1</b>
<b>ANNEX I</b>	<b>MOE'S SUPPORT – PROV. COORDINATION PLAN FOR PANDEMIC INFLUENZA</b>	<b>I - 1</b>
<b>ANNEX J</b>	<b>MOE'S RESPONSE SUPPORT FOR OTHER EMERGENCIES</b>	<b>J - 1</b>
<b>ANNEX K</b>	<b>MOE'S CONTINUITY OF OPERATIONS - KEY COMPONENTS</b>	<b>K - 1</b>

---

**ANNEXES ARE COMPILED AND HELD AS SEPARATE DOCUMENTS**

---

# **EMERGENCY RESPONSE PLAN**

FOR

## **SPILL AND DRINKING WATER EMERGENCIES**

AND OTHER

## **EMERGENCIES THAT REQUIRE A MINISTRY RESPONSE**

---

### **1. - INTRODUCTION**

The Ministry of the Environment (MOE) is responsible for the enforcement of the *Environmental Protection Act*, the *Ontario Water Resources Act*, the *Safe Drinking Water Act*, the *Nutrient Management Act*, the *Environmental Assessment Act*, the *Pesticides Act* and the *Environmental Bill of Rights*. Certain aspects of the Ministry's legislation govern facilities and activities within the private and public sector in Ontario that could be involved in environmental events beyond the response capability of the party with statutory duties and responsibilities. Such events also have the potential to involve the response resources of local or municipal authorities. There is the potential for some of these events to escalate to an emergency, as the term is defined by the *Emergency Management and Civil Protection Act*, "a situation or an impending situation caused by the forces of nature, an accident, an intentional act or otherwise that constitutes a danger of major proportions to life or property".

The *Emergency Management and Civil Protection Act* (EMA) requires all Ontario ministries to develop and implement Emergency Management Programs. Key program elements prescribed by regulation include the establishment of:

- An Emergency Management Program Committee to steer the development and implementation of the required program within the Ministry, and
- A Ministry Action Group structure to direct the Ministry's response during emergencies.

All ministries are required to have Continuity of Operations Plans (Business Continuity Plans) to ensure continued delivery of critical functions and services during emergencies.

A number of ministries, including MOE, are also required to have Emergency Response Plans that focus on specific types of emergencies resulting from “external” events or accidents that could have a major impact on the public or the environment. These include accidents at commercial or industrial facilities, public utilities or through other activities in the public domain that fall within the regulatory sphere of the Ministry. Within this framework, the Lieutenant Governor in Council has assigned the Minister of the Environment responsibility for two categories of emergencies:

- Spills to the natural environment including fixed site and transportation spills and
- Drinking water emergencies.

This document is intended to fulfill the requirement for the Minister to formulate an emergency response plan that addresses spill and drinking water emergencies.

In addition to the responsibilities assigned by Order-in-Council, the Ministry also has other related commitments or may otherwise be expected to provide a support role function for several other types of emergencies, where a component of these emergencies pose a threat to the natural environment and where MOE can be of assistance as a participant in a response spearheaded by another ministry or agency. This document also fulfills these specific external requirements.

MOE’s Continuity of Operations Plan is a separate emergency plan designed to ensure the continuity of the Ministry’s critical services and functions during and after an emergency. Relevant components of MOE’s Continuity of Operations Plan are appended to MOE’s Emergency Response Plan as Annex K. Operationally, the link between the Ministry’s internal continuity of operations requirements and external emergency response activity is achieved through a common senior-level decision-making group known as the Ministry Action Group.

In summary, the primary purpose of this MOE Emergency Response Plan is to address MOE’s requirement to develop an emergency plan for spills to the natural environment and for drinking water emergencies. The MOE Emergency Response Plan also underpins the Ministry’s participation as a partner in a response to a variety of emergencies for which other ministries or agencies have overall lead-role responsibilities or have primary on-site operational authority, but where a component of such emergencies includes a threat to the natural environment.

## **2. - SCOPE AND APPLICATION**

This Chapter outlines the purpose, objectives and limitations of the MOE Emergency Response Plan and focuses on the role of MOE as it relates to spills and drinking water emergencies for which MOE has lead responsibility, and on the role of MOE for a response to emergencies where the threat to the environment is possibly only one aspect of the event and where other agencies have lead role responsibilities.

### **2.1 AUTHORITY**

The authority of the Plan is the *Emergency Management and Civil Protection Act* (EMA), Ontario Regulation 380/04, and the associated Order-in-Council. The EMA requires “every minister of the Crown ... to formulate an emergency plan for the ministry or branch of government, as the case may be, in respect of the type of emergency assigned to it by the Lieutenant Governor in Council, governing the provision of necessary services during an emergency and the procedures under and the manner in which Crown employees and other persons will respond to the emergency”.

### **2.2 PURPOSE AND LIMITATIONS**

The purpose and limitations of this Plan are guided by the duties and responsibilities imposed on specific parties by legislation administered by MOE and by the definition of an emergency under the *Emergency Management and Civil Protection Act*. An emergency under the Act means, “a situation or an impending situation caused by the forces of nature, an accident, an intentional act or otherwise that constitutes a danger of major proportions to life or property”. This has to be read in conjunction with MOE’s legislation, which imposes significant duties and responsibilities: for spills on the person who owned and the person who had control of the pollutant immediately prior to the spill, and for drinking water events on the drinking water provider.

The MOE Emergency Response Plan focuses on coordinating available Ministry expertise and response resources that may be required to deal with spill or spill-related environmental emergencies, and drinking water emergencies. The MOE Emergency Response Plan is also intended to serve as a response vehicle for other types of emergency situations which, because of their nature, might require the Ministry’s expertise, participation or intervention, as may be applicable.

This Plan may be activated for the purposes and through the mechanisms as outlined herein. The Plan is intended to deal with spill and drinking water emergencies where MOE may be required to serve as lead ministry for a response

on behalf of the Ontario Government, and other emergencies that require a response where MOE provides a support role or serves as a response partner. The Plan and decisions or actions under the Plan may be superseded by plans, procedures or priorities that address a threat to the health, safety and welfare of people or to property; a responsibility area that normally falls to a local medical officer of health, to fire or police officials or other first responders, or to provincial or federal ministries or agencies with a specific mandate for such matters.

The purpose of this Plan is to establish a coordinated MOE response structure to events that escalate to a level where the Ministry has to intervene, or when MOE is asked by another agency to participate in a response. Towards this end, the MOE Emergency Response Plan relies primarily on MOE's overall mandate related to spills and drinking water events. This includes MOE's regulatory and monitoring programs related to unauthorized or accidental releases of polluting substances, and their containment, cleanup and disposal; and the provision and coordination of expertise where regulated drinking water systems are threatened.

The response structure for MOE developed for this Plan will also support MOE's participation in an overall Government response under the Province of Ontario Emergency Response Plan developed for complex (non-nuclear) emergencies (see Annex G). Likewise, MOE's response structure developed for this Plan supports the Ministry's participation in a response to events that fall under the Province of Ontario Nuclear Emergency Response Plan or the associated emergency plans that focus on related nuclear threats or events (see Annex H). Also note Sub-section 2.4.4.

The MOE Emergency Response Plan may also be activated in whole or in part as may be required to supplement the "Canada and the Province of Ontario's Foreign Animal Disease Emergency Response Plan" in the event of an outbreak of a foreign animal disease, as noted in Sub-section 2.4.4 and as outlined in Annex F.

In addition, the MOE Emergency Response Plan may be implemented in whole or in part in order to facilitate a coordinated Ministry response in support of the Canada Marine Pollution Contingency Plan, under the operational control of the Canadian Coast Guard, for environmental and drinking water supply issues associated with pollution incidents in Canadian navigable waters and harbours that occur as a result of activities regulated under the *Canada Shipping Act*. Note Annex D.

The MOE Emergency Response Plan may also be implemented in whole or in part to supplement the Canada/US Joint Marine Pollution Contingency Plan developed under the Canada – US Great Lakes Water Quality Agreement. The Canadian Coast Guard has lead agency responsibilities on the Canadian side of the Canada/US border under this international contingency plan, and MOE Emergency Response Plan may be utilized to facilitate a coordinated MOE response as a response partner for matters related to environmental and drinking water supply issues that impact or threaten Ontario. Note Annex D.

Similarly, the MOE Emergency Response Plan may be implemented in whole or in part to supplement the Canada – United States Joint Inland Pollution Contingency Plan. The Inland Plan addresses spills and other accidental pollution events of a cross-border nature not addresses by the Canada/US Joint Marine Pollution Contingency Plan mentioned above. Note Annex D.

However, the MOE Emergency Response Plan is not designed to provide a primary response mechanism for releases of hazardous materials or pollutants that cause an impact for which the party with statutory duties is expected to undertake an adequate response, or where the local community can reasonably be expected to respond. Under all conditions, and without regard to the magnitude of the release, the discharger of pollutants remains responsible for the event and for all costs incurred as a result of a response under this Plan.

Notwithstanding the above, the discharger and the local community may seek assistance through this Plan where the circumstances of the event dictate such needs. Reimbursement to the Province for associated costs may be required.

It is important to reiterate that operational response decisions under this Plan may be superseded by emergency plans, authorized procedures or priorities that address matters specific to state security, health and safety issues of the general public and responders, and the threat to the infrastructure of communities or to real property. Operational response decisions by MOE may also be superseded by another provincial or federal agency that has lead role responsibility where MOE responds in a support role as one of possibly several other response partners.

## **2.3 PLAN OBJECTIVES**

The aim of this Plan is to provide a framework for a systematic, coordinated and effective MOE response to a spill or drinking water emergency as well as to other emergencies where Ministry support is required. This Plan also provides a focal point for the provision of assistance, as may be required, in support of other emergency or contingency plans. This Plan may serve to support a response to other urgent events with relatively minor impact for which the full thrust of an emergency plan would normally not be implemented, but where it is opportune to utilize MOE's emergency response structure outlined in this Plan.

The objectives of this Plan are to meet the requirements of Regulation 380/04 and to establish appropriate preparedness measures for responding to:

- significant spills or unauthorized and accidental releases of pollutants for which MOE has to intervene;
- deal with or address drinking water emergencies beyond the capability of the local community or owner/operating authorities; and
- other emergencies or events where MOE support or assistance is required.

## **2.4 ROLE OF MOE**

The Ministry of the Environment is responsible for achieving and maintaining a quality of the environment that will protect human health and the ecosystem, and will contribute to the well being of the people of Ontario.

Within these generalities, the role of the Ministry of the Environment for emergencies that have an environmental component in general, and more specifically for spills to the natural environment from fixed facilities and transportation accidents and for drinking water emergencies are summarized in the sub-sections below.

### **2.4.1 Emergencies**

The primary responsibility for public health and safety in the case of an emergency rests with municipalities, which are required by the *Emergency Management and Civil Protection Act* to prepare emergency plans. Municipalities normally seek assistance from the Province through Emergency Management Ontario when emergencies escalate, and MOE participates in a Provincial response for events that include an environmental component including a threat to drinking water supplies.

For emergencies that have an environmental component, MOE's role is to provide information on environmental effects and make recommendations to local authorities in charge of the emergency, normally the fire chief, the medical officer of health, or others who have the authority to act on the advice. However, it is not the Ministry's responsibility to provide the first line of response.

### **2.4.2 Spills**

The Ministry's primary role in the event of a spill is to ensure that whoever is responsible for the spill contains the spilled pollutant and cleans up the site in accordance with Ministry requirements.

It is important to note that the primary responsibility for containment and the cleanup of spills and the disposal of spilled contaminants in an approved manner, as well as any associated costs, remains with the person who had charge or management of the material spilled immediately prior to the spill and the person who owned the material spilled immediately prior to the spill.

It is also noted that the person who caused the spill and the person who had control of the material spilled immediately prior to the spill are required to report the event to the Ministry of the Environment and to the municipality in which the spill takes place.

Notification to the Ministry of the Environment does not relieve the party of notification requirements to other agencies or parties under additional notification requirements.

Other notification and cleanup requirements at the national, provincial or local level, as well as civil or other duties or liabilities that may apply to pollution incidents are a function of the type of event. Additional municipal requirements may also apply.

Municipal or regional authorities may also be involved in the response to spill pollution incidents especially if there is concern for the protection of public safety, property, municipal infrastructure, vital services and sensitive areas.

In addition to the statutory duties imposed by the *Environmental Protection Act* on the discharger, the Act also extends municipalities the right to respond to spills and the right and a mechanism to recover their costs. Thus, municipalities can reasonably be expected to assist the discharger's response to inadvertent or accidental releases of pollutants especially where these threaten municipal interests.

Within this framework, the Ministry's regulatory function is to ensure that the discharger responds promptly, and complies with the statutory requirements for cleanup, disposal, and the repair of damage to property and to the natural environment.

With respect to spills, the Ministry's role is:

1. To receive notification and information of accidental and inadvertent discharges of pollutants to the natural environment and to assist in warning potentially affected parties, where applicable.
2. To inspect and monitor spills of hazardous materials and other pollutants released to the natural environment in order to:
  - (a) Ensure that the discharger takes appropriate measures,
  - (b) When required, offer advice and make recommendations as to the best practicable cleanup and disposal measures to be followed,
  - (c) Monitor the response activities of responsible parties and, when warranted, to initiate abatement and enforcement measures or to intervene or pre-empt response measures (as a last resort) in order to protect the interests of the public and the interests of the Ministry, and
  - (d) Where applicable, make recommendations with respect to procedures or equipment, spill prevention, and/or improved spill response,
3. To provide information, as it may be available, and offer advice and make recommendations to the fire chief and/or the medical officer of health, or to others in charge of the emergency who have the authority to act on the information, advice or recommendations, as applicable.
4. To provide support as established by the inter-government or inter-agency Memoranda of Understanding or similar undertakings, and formal emergency or contingency plans listed in Section 2.4.4 and the Annexes.

### **2.4.3 Drinking Water Events**

The *Safe Drinking Water Act* places responsibility for the adequate treatment of drinking water on the owner or operating authority of drinking water systems. The

Act also requires routine and frequent testing of drinking water for all designated systems. Furthermore, the Act requires laboratories that analyze water samples to report adverse test results immediately to MOE as well as to the local Medical Officer of Health. The Ministry and local health officials are therefore in a position to be aware of potential health threats as soon as possible.

The primary responsibility for the provision of safe drinking water rests with the owner/operator of the drinking-water system. The Ministry's role is to ensure that these responsibilities are undertaken. Under specified circumstances the Ministry may issue orders and notices and may require that an agency or person, other than the owner, undertake necessary activities.

The circumstances leading to a potential drinking water emergency could relate to issues of water quantity and/or water quality. Water quality issues could, in turn, relate to chemical or pathogenic contamination. In most cases, contamination events will be effectively controlled through prescribed regulatory or site-specific corrective actions and would not normally constitute an emergency.

It is important for MOE to work closely with the local Medical Officer of Health, the person (authority) with the mandate for health hazard and health risk assessments, and with municipal officials and other agencies that may become involved.

Matters relevant to a drinking water emergency include the:

- Cause of event,
- Nature and magnitude of the event,
- Likelihood of effective and timely remedial/corrective action,
- Abilities and willingness of the owner to respond to the events,
- Extent of the system potentially impacted,
- Anticipated duration of the event,
- Observation of trends in the ongoing assessment of the event,
- Availability of an alternate water supply,
- Occurrence of other simultaneous events (such as a fire), and the
- Possible adverse consequences of remedial/corrective action (e.g. shutting down the system).

#### **2.4.4 Related Support Functions**

In addition to the role of MOE in emergencies mentioned in Sub-section 2.4.1, MOE's roles and functions for spills under Sub-section 2.4.2, and MOE's role for drinking water events under Sub-section 2.4.3, above, the MOE's Emergency Response Plan is also intended to provide assistance during any other emergency where a coordinated MOE support is required. This includes a response under the following specific emergency and contingency plans:

1. Province of Ontario Emergency Response Plan; prepared by Emergency Management Ontario of the Ministry of the Community Safety and

Correctional Services to coordinate a multi-agency response by the Government of Ontario that may be required for (non-nuclear type) emergencies that pose a threat of major proportion to people or to property and is beyond the response capability of local authorities. The Provincial Emergency Response Plan establishes decision groups that would manage an emergency, and creates several groups of specialists and experts that would be called upon to provide input to the decision-making process created under the structure of the Plan. MOE participates on several of these groups (see Annex G). Formal MOE participation for events that fall under the Provincial Emergency Response Plan takes place between MOE's Ministry Action Group (see Section 4.2) and MOE's representative within the Provincial Emergency Operations Centre maintained by Emergency Management Ontario (see Section 4.1 and Schematic 2).

2. Province of Ontario Nuclear Emergency Response Plan; prepared by Emergency Management Ontario (EMO) in accordance with specific requirements for such a plan under the *Emergency Management and Civil Protection Act*. The Nuclear Emergency Response Plan coordinates a multi-agency response by the Government of Ontario for an accident at nuclear power facilities in Ontario (and elsewhere if such an accident were to pose a threat to Ontario). A family of related and supplemental emergency plans prepared by EMO focuses a government-wide response to other "nuclear", non-conflict threats. This includes the Provincial Liquid Emissions Response Plan and the General Province-wide Monitoring Plan. These plans rely on decision groups and teams of experts similar to those established under the Ontario Emergency Response Plan (above), and pre-selected MOE staff participates on several of these groups and teams (see Annex H). Formal MOE participation for events that fall under any of these (nuclear) plans takes place between MOE's Ministry Action Group (see Section 4.2) and MOE's representative within the Provincial Emergency Operations Centre (see Section 4.1 & Schematic 2).
3. Canada and the Province of Ontario's Foreign Animal Disease Emergency Response Plan; prepared by the Canadian Food Inspection Agency (CFIA), the Ministry of Agriculture and Food (OMAF), and Emergency Management Ontario. The Canada/Ontario FAD Plan is a coordinated multi-agency and multi-disciplinary response mechanism designed specifically to address the threat of foreign animal disease (FAD). A FAD outbreak necessitates the culling and disposal of large numbers of animals, and as a result the Canada/Ontario FAD Plan requires MOE's input to recommendations associated with the disposal of animal carcasses and related contaminated or suspect materials. The link between the foreign animal disease plan and the MOE Emergency Response Plan is established through MOE's Ministry Action Group (see Section 4.2) via MOE's representative within the Provincial Emergency Operations Centre (Schematic 2) maintained by Emergency Management Ontario. See Annex F for specific details related to MOE's participation under the Canada/Ontario FAD Plan.

4. Canada - US Joint Marine Pollution Contingency Plan, developed under the Great Lakes Water Quality Agreement, a formal agreement signed by the Prime Minister of Canada and the President of the United States of America. The coast guards of both countries administer this contingency plan jointly. The Plan includes early notification, surveillance and monitoring, as well as response provisions for events, normally as a result of maritime activities. The type of event for which this plan was prepared are those that impact the other country, threaten to impact the other country, or may be of such a nature or magnitude to make it advisable to notify or to involve the other party. Under this Plan, MOE is expected to deal with associated environmental issues within MOE's mandate on the Ontario side of the Canada – US border, and SAC serves as the notification focal point and communications link between the Canadian Coast Guard and MOE. The activation of all or part of the MOE Emergency Response Plan facilitates MOE's coordinated participation in the wider response to an event that falls under the Canada – U.S. Joint Marine Pollution Contingency Plan.
5. National Marine Emergency Plan; more specifically its annex that addresses marine emergencies for the Great Lakes and their Inter-Connecting Channels, both prepared by the Canadian Coast Guard. The plan addresses spills that impact Canadian waters from vessels in transit or during loading or unloading operations. MOE is expected to deal with associated environmental issues within MOE's mandate, and SAC serves as the primary communications conduit between the Canadian Coast Guard and MOE and other provincial entities, as necessary. Again, the activation of all or part of the MOE Emergency Response Plan facilitates MOE's coordinated participation in the wider response to an event that falls under the Canadian Coast Guard's response mechanism.
6. Canada – United States Joint Inland Pollution Contingency Plan; prepared between Environment Canada and the US Environmental Protection Agency. In Ontario, the Plan applies to accidental and unauthorized spills and pollution events that may cause damage to the environment along the shared inland boundary of both countries and that may threaten the other party, other than events addressed by the Canada - US Joint Marine Pollution Contingency Plan already outlined in item 4 above. MOE may be required to participate under the response structure established by the Inland Plan if that Plan is activated, and the activation of all or part of the MOE Emergency Response Plan would facilitate MOE's participation in a response to an event that falls under the Canada – United States Joint Inland Pollution Contingency Plan.

## **2.5 PLAN ACTIVATION**

This Plan is intended to facilitate a Ministry response to a variety of emergencies. It must be recognized that decisions and actions under this Plan will need to be combined with the authority and priorities of other agencies, and that the

coordination of response activities for complex emergencies including final operational decisions will likely fall to authorities or entities other than MOE.

### **2.5.1 Provincial-level Emergency**

The authority to declare an emergency at the provincial level rests with the Premier. The Premier may designate any Minister including the Minister of the Environment to exercise any powers conferred to the Premier by the *Emergency Management and Civil Protection Act*. A coordinated Government response to a provincially declared emergency would be managed by Emergency Management Ontario out of the Provincial Emergency Response Centre where MOE and several other ministries have prescribed roles and pre-determined representation; see Section 2.10 and Schematics 2 and 3. The umbrella Provincial Emergency Response Plan and the Provincial Nuclear Emergency Response Plan are the primary plans that outline an overall Government response in which MOE is one of several response partners. This Ministry's Emergency Response Plan facilitates MOE's response component to such events.

The MOE Emergency Response Plan will be activated fully in support of a provincially declared emergency:

- Where MOE is required to participate in the response efforts to an event that is a declared emergency, including emergencies for which the Provincial Emergency Response Plan or the Provincial Nuclear Emergency Response Plan has been activated; - or
- For any other type of emergency for which the Provincial Emergency Operations Centre has been activated and MOE has been asked to participate in the response.

For all other type of emergencies see Sub-section 2.5.2.

A request for MOE's participation to the response of such emergencies will normally be made by Emergency Management Ontario and routed to MOE via the Ministry's Emergency Management Program Coordinator (EMP Coordinator) or the Ministry's Spills Action Centre (SAC). Such requests will be relayed to the Executive Lead of the Ministry Action Group (MAG), see Section 4.2, normally via MOE's EMP Coordinator, or via SAC's management.

The MAG Executive Lead may activate this Plan or any component of this Plan. The activation of this Plan or any component of this Plan will be made by notifying all MAG members (see Section 4.2), and RAG members (see Section 4.3) as may be applicable. SAC, or others assigned this task at the time of the event, will facilitate this notification process under the direction of the MAG Executive Lead.

The activation of the MOE Emergency Response Plan may be scaled back by the Executive Lead of the Ministry Action Group during the response phase of an emergency as may be dictated by the complexity of the event and the degree to

which MOE is asked to participate, and shifting priorities or the progress of managing the emergency during the response phase of the event.

## **2.5.2 All Other Emergencies**

The MOE Emergency Response Plan may be activated in whole or in part to facilitate MOE's participation in a response to urgent situations or emergencies even if the Provincial Emergency Operations Centre is not activated. Such events include:

- Major spills that result in events below the level of an emergency as the term is defined in the *Emergency Management and Civil Protection Act*;
- Emergencies or urgent drinking water events beyond the response capability of a drinking water owner/operator authority or the community;
- Those events where another ministry, agency or authority has the lead role and where MOE elects to make use of a formal mechanism for providing support;
- Extraordinary and urgent events within MOE's normal mandate where the discharger or local authorities are unable or unwilling to deal with the event and where MOE elects to make use of a formal response mechanism; and
- Situations that require the activation of MOE's Continuity of Operations Plan.

A request for MOE's participation to the response of such emergencies may come from the regulated community, municipal authorities, another ministry or agency, or as a result of any of several inter-agency agreements and undertakings or emergency and contingency plans listed in Section 2.4.4 and in the Annexes. Such a request will normally be routed to MOE via the Ministry's Emergency Management Program Coordinator or the Ministry's Spills Action Centre (SAC), and relayed to the MAG Executive Lead normally via the EMP Coordinator or via SAC's management.

Any member of the MOE Ministry Action Group (see Section 4.2) may request the activation of this Plan for the type of emergencies referred to in this Sub-section.

The Executive Lead / Chair of the Ministry Action Group may activate this Plan or any component of this Plan. The activation of this Plan or any component of this Plan will be made by notifying all MAG members (see Section 4.2), and as applicable members of MOE Regional Action Group(s) (see Section 4.3). SAC, or others assigned this task at the time of the event, will take part in this notification process under the direction of the MAG Executive Lead.

For some types of emergencies, it may be sufficient for the MAG Executive Lead to activate only the Regional Action Group(s) for the area(s) involved in a response to the type of emergency or event referred to in this Sub-section.

The activation of the MOE Emergency Response Plan may be scaled back during the response phase of an emergency as may be dictated by the circumstances and the progress of managing the emergency during the response phase of the event, or as applicable by shifting or residual priorities, by: a) the Executive Lead (or Chair) of the Ministry Action Group including the Assistant Deputy Ministers (ADM) identified to serve as Executive Lead (or Chair) for applicable scenario-specific Annexes to this Plan, or b) by the Lead of the Regional Action Group where the Ministry Action Group has not been activated or is no longer activated.

### **2.5.3 Response Coordination with Others**

The type of emergency for which this MOE Emergency Response Plan may be activated as noted in Sections 2.5.1 and 2.5.2 above, are events that are likely to involve other ministries and municipal authorities, and emergencies where operational leadership falls to entities other than MOE.

Annex D of this Plan focuses on spill emergencies where MOE may be required to serve as lead Ministry. At the same time, spill emergencies may only be a part of a larger event where MOE serves a support role function and for such events Annex D also addresses response coordination between MOE and other entities involved. Annex E of this Plan focuses on drinking water emergencies and similarly addresses the topic of response coordination with other entities involved. Annex F covers the topic of inter-agency coordination amongst various response partners for MOE's response component under the Foreign Animal Disease Plan. Annex G focuses on MOE's response component under the Provincial Emergency Response Plan, Annex H focuses on MOE's response component under the Province of Ontario Nuclear Emergency Plan, and Annex I addresses MOE's participation under the Provincial Coordination Plan for Pandemic Influenza.

## **2.6 RESPONSE ACTIONS AUTHORIZED**

MOE employees are authorized to take action in good faith under this Plan, and within the purpose and limitations of this Plan as summarized in Section 2.2, where an emergency exists even if it has not yet been declared to exist, and within the limits of protection from personal liability provided by Section 11(1) of the *Emergency Management and Civil Protection Act*. This provision of the EMA states that, "No action or other proceeding lies or shall be instituted against ..... a minister of the Crown or a Crown employee for doing any act or neglecting to do any act in good faith in the implementation or intended implementation of ..... an emergency plan or in connection with an emergency".

## **2.7 PLAN TERMINATION**

A response under the MOE Emergency Response Plan may be terminated as may be dictated by the circumstances, the progress made during the response phase of the event, and the residual priorities as the emergency de-escalates.

The Executive Lead /Chair of the Ministry Action Group may de-escalate or terminate response actions under this Plan or any component of this Plan. A response under the MOE Emergency Response Plan may be scaled back or terminated by formally advising all response participants.

## **2.8 ALERTING THE PUBLIC**

For spill and drinking water emergencies and for any other emergency or event for which this MOE Emergency Response Plan is activated, MOE will work with local authorities (including the local Medical Officer of Health) and other provincial and federal authorities to ensure that the public is alerted and kept up to date during the emergency situation. The responsibility for this falls to MOE's Emergency Information Officer. The topic of news releases and other forms of official communications with the public, the community and the media is highlighted under the topic of Public Information in Section 4.4, and details are provided in Annex C. Annex C also addresses the topic of alerting the public and keeping the public informed throughout the emergency.

## **2.9 ADMINISTRATIVE MATTERS**

The custodian of this Plan is the Ministry's Emergency Management Program Coordinator.

Administrative matters related to this Plan are detailed in Annex A, and the Annex addresses matters related to:

- Maintenance of the Plan: review, amendments and updates;
- Internal Notification Mechanisms;
- Exercises and training; and
- Availability and distribution of the Plan and its Annexes.

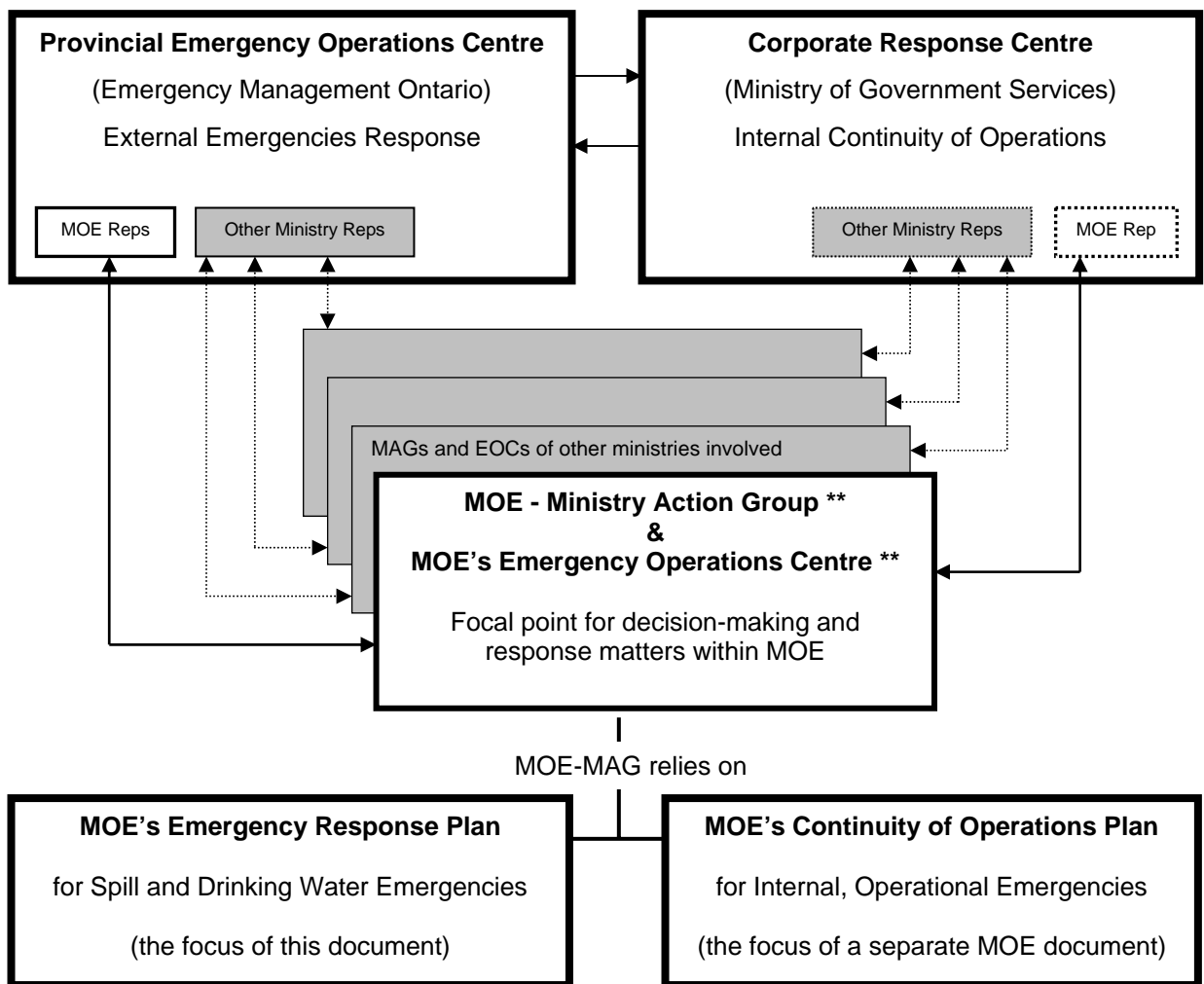
## 2.10 PROVINCIAL RESPONSE PERSPECTIVE

The simplified diagram, Schematic 1, below is intended to illustrate the relationship of this Plan within the framework of Ontario's overall response structure.

### SCHEMATIC 1

### EMERGENCY RESPONSE PERSPECTIVE

#### Simplified Overview \*



\* This simplified overview applies to provincial emergencies that impact externally on the public as well as internally on provincial government operations. Only some aspects would apply to lesser emergencies.

\*\* MOE's Emergency Operations Centre and the Ministry Action Group are described in Chapter 4.

*This page was intentionally left blank*

## **3 - MOE RESOURCES**

This Chapter summarizes MOE program areas from which resources and expertise is drawn for a response to spill and drinking water emergencies to which MOE may have to respond. Details of these resources beyond the summary outlined in Chapter 3 of this Plan, if required, are held in Annex B. Such detail is normally maintained by MOE's Spills Action Centre (SAC) and tends to be subject to frequent updating. Annex B of this Plan is intended for information that expands the generalities of this Chapter unless it is already part of SAC's information and contact lists. The decision with respect to coordinating how and when any of these resources are made available is the responsibility of MOE's Ministry Action Group or, as applicable, MOE's Regional Action Group(s). These role and composition of these groups are described in Chapter 4 of this Plan.

### **3.1 SPILL RESPONSE PROGRAM**

MOE has operated a comprehensive spill response program for several decades. The primary elements of this program consist of a centralized MOE focal point for receiving, evaluating and processing reported spills and other reported environmental discharges, and three escalating levels of field response.

#### **3.1.1 Spills Action Centre**

The central MOE reporting focal point is the Spills Action Centre (SAC), staffed by environmental officers on a 24/7 basis. SAC receives reports of approximately 30,000 events per year, of which some 3,000 to 4,000 are "spills" within the framework of Part X of the *Environmental Protection Act*. The remainder of the events reported to SAC fall into the categories of: a) reportable adverse results of drinking water tests and other observations, b) events reportable under various MOE approval mechanisms, c) reports received on behalf of client agencies, and d) a variety of environmental concerns reported by the general public.

SAC's primary function can be summarized as follows:

- Assessing from the information reported, or obtained from third parties, if the reported event is adequately taken care of by the discharger;
- Determining the magnitude or complexity of the event and evaluating how quickly the Ministry needs to respond;
- Determining what additional public sector entities should be advised; and as applicable
- Facilitating or brokering a response for events within MOE's mandate where the response is inadequate or the responsible party defaults, or when first responders request a Ministry response.

SAC staff carries out their functions guided by various standard operating procedures, and non-standard procedures that apply to unique situations or geographic areas, all of which are supported by a number of 24/7 contact lists. SAC also has access to contacts of other agencies and to various reference materials.

In addition to the primary function of the Spills Action Centre to receive and process mandatory notifications for spills and several other types of reportable events, SAC is responsible to satisfy additional Ministry commitments related to spills. These commitments are imbedded in SAC's Procedure Cards, and include:

- Inter-agency notification undertakings with other provincial and federal agencies for the exchange of information on spills and other serious pollution events; and
- Other related commitments through inter-agency agreements, undertaking or through formal contingency plans.

Furthermore, SAC serves as a primary communications link between MOE and the Provincial Emergency Operations Centre (PEOC) responsible for notifying MOE staff that may have to participate in various tasks under the Provincial Emergency Response Plan, the Province of Ontario Nuclear Emergency Response Plan, or under any other emergency plan that triggers the need for MOE to participate in a response. SAC also facilitates subsequent communication needs between MOE and the PEOC, and between MOE and other agencies with lead role responsibilities.

### **3.1.2 Field Activity and Response**

MOE's field response is carried out in three distinct and sequential levels.

#### Level-1 MOE district response

Environmental officers working in district or area offices provide the ministry's initial level of field response. The primary role of the response by environmental officers is to make sure that the owner or persons who had control of the material immediately prior to a spill contain, remove and dispose the contaminants, as is required by legislation. At this response level, MOE staff conducts an initial field assessment as may be required, and determines what extra resources are needed and what additional actions may need to be taken. MOE's environmental officers can also request the next level of Ministry response when necessary. Outside of regular working hours MOE district offices have an on-call environmental response person who may be sent to the scene at the discretion of the Spills Action Centre.

#### Level-2 MOE regional response

The second level, or Level-2 MOE regional response, is provided through expertise and resources available at the Ministry's five regional offices.

Level-2 regional response is intended to assist a district response (Level 1) when extra personnel may be required to address escalating resource requirements for managing multifaceted environmental issues while maintaining routine day-to-day operations of the impacted district office.

A Level-2 MOE regional response is used where additional expertise is required by an MOE district office, and that may be available within MOE's regional structure, to assess the current or potential environmental and human health impact, to provide guidance on clean-up and or disposal options, to handle public and internal communications, to provide modeling and monitoring information and interpretation, to provide support, guidance and approval to initiate "directions", "approvals" or "orders" - all specific legal instruments under the *Environmental Protection Act*, and to provide logistic/safety support. MOE's regional offices have experts trained in groundwater and surface water management, air management, waste disposal management, pesticide management, communications, procurement and incident command. This expertise can enhance MOE's Level-1 district response or provide leadership and direction, as may be required.

#### Level-3 MOE head office response

A Level-3 head office response makes available expertise or resources for emergencies from other divisions within the Ministry to supplement the resources available within MOE's regional structure. The primary division of the Ministry that supports a Level-3 response is the Environmental Sciences and Standards Division. Three branches within this division provide the bulk of Level-3 response, these are: the Standards Development Branch, the Laboratory Services Branch and the Environmental Monitoring and Reporting Branch.

The Standards Development Branch may provide assistance through the use of its human health and/or ecological toxicologists, scientists who study the impact of pollutants on humans, fish, animals, water and soil.

The Laboratory Services Branch (LSB) provides analytical laboratory services to the Ministry. In a Level-3 situation, LSB becomes the recipient of water, soil and some air samples for rapid and analytical determinations.

The Environmental Monitoring and Reporting Branch (EMRB) provides a variety of scientific expertise and resources. These include:

- Specialized air monitoring, through a state of the art equipment housed in a mobile vehicle known as "TAGA" (Trace Atmospheric Gas Analyzer);
- Inland rivers and lakes surface water quality monitoring;
- Great Lakes surface water quality monitoring utilizing a high-tech vessel;
- Vegetation and soil monitoring by phyto-toxicologists;
- Aquatic species monitoring, also known as bio-monitoring; and
- Environmental modeling (air and water)

A Level-3 situation typically involves the TAGA and/or the environmental modeling services of EMRB in support of a combined Level 1 and Level 2 MOE filed response. The TAGA is the state of the art air-monitoring device housed on a 10-meter long vehicle and equipped to measure about a thousand compounds on the “fly”. In addition, the TAGA vehicle contains on-board meteorological monitoring capabilities for instantaneous measurements of local wind speed, direction and air temperature. In a Level-3 situation, the TAGA can be used to obtain measurements of airborne pollutants, information that may assist first-line emergency responders and others where it is necessary to determine if the downwind concentrations of airborne chemicals are safe. The TAGA can respond in a reasonable timeframe, depending on where in Ontario the TAGA is situated in relation to the emergency, given that the TAGA may be located anywhere in Ontario from April to October for routine monitoring activities or for providing specialized monitoring services.

EMRB air and water environment modeling may also be of assistance for a Level-3 emergency that requires the state-of-the-art scientific and mathematical models for the assessment of the relation between pollutants released and potential environmental impacts. Modeling that EMRB might be able to provide include an assessment of the downwind impact for some fires that involve a chemical release to the atmosphere, and an assessment of the downstream impact for some spills to watercourses and where run-off water has the potential to impact downstream users.

### **3.2 DRINKING WATER PROGRAM**

MOE’s Drinking Water Management Division (DWMD) is responsible for meeting the Ministry’s objectives for safe drinking water throughout the Province of Ontario.

The enactment of the *Safe Drinking Water Act* (SDWA) and related regulations provide the legislative foundation for the division’s objectives, and provides the Ministry with significant powers for drinking water emergencies.

In situations of imminent drinking water health hazards in a municipal drinking-water systems or a regulated non-municipal drinking-water system, and for a failure of a laboratory to do a thing in respect of a drinking-water test, the Minister is provided with broad powers to eliminate or ameliorate the hazard. The Minister can:

- Temporarily suspend drinking-water testing licences;
- Direct to one or more holders of drinking-water testing licences that a drinking-water test or class of tests is to be conducted under the licence in accordance with the method specified;
- Direct the Director to issue an emergency response;
- Immediately cease or restrict the operation of the drinking water;
- Provide the users of the system with an alternative supply of drinking water; and
- Initiate specific requirements for sampling, testing, monitoring and reporting with respect to the quality or quantity of any waters.

The Director has authority under the SDWA to make Orders with respect to imminent drinking water health hazards in a municipal drinking-water system or a regulated non-municipal drinking-water system, but does not have the authority to order laboratories to suspend drinking water testing licences, or to set out how the drinking water test should be carried out. The Minister's Order prevails over all other orders issued by a Director or a provincial officer or directions issued by the Director.

The *Safe Drinking Water Act* also provides the Director with the authority to issue a notice of emergency response that can direct the Ontario Clean Water Agency or another person to do certain things as set out in the notice. The notice of emergency response is limited to 90 days but can be extended with the approval of the Minister or the Chief Medical Officer of Health. The purpose this provision permits the Ontario Clean Water Agency or another person to eliminate or ameliorate the imminent drinking water health hazards when the owner of the facility is unable or unwilling to do so.

In addition to the specific emergency powers summarized above, there are other powers in the *Environmental Protection Act*, the *Nutrient Management Act*, the *Ontario Water Resources Act* the *Pesticides Act* and the *Safe Drinking Water Act* which allow Ministry staff to respond to situations that may impair the natural environment, cause injury or damage to property or to plant or animal life, may cause an adverse effect on the health, or impair the safety of any person.

MOE's Drinking Water Management Division has lead responsibility for program and operational activities related to the protection and provision of safe drinking water. The division has staff located in MOE's Regional and District offices, and the division's head offices consist of the:

- Office of the ADM/Chief Drinking Water Inspector;
- Safe Drinking Water Branch (SDWB);
- Drinking Water Program Management Branch (DWPMB); and
- Education and Outreach Branch (EOB).

### **3.2.1 ADM/Chief Drinking Water Inspector's Office**

The ADM/Chief Drinking Water Inspector's Office leads the Ministry's drinking water activities and works with the broad community of stakeholders to provide safe drinking water in Ontario. More specifically, the office:

- Manages the Division's organizational design and promotes innovation and knowledge sharing;
- Works with scientific, analytical and program experts across the Ministry to increase the integration of MOE's drinking water programs;
- Looks for ways to improve continuously the Ministry's responses to safe drinking water issues; and
- Represents the Province on all drinking water issues.

### **3.2.2 Safe Drinking Water Branch**

The Safe Drinking Water Branch has overall responsibility for managing and delivering drinking water approval and compliance programs in the field. The branch is comprised of well-trained, well-equipped and highly technical field supervisors and inspectors. In addition, the Approvals & Licensing Unit at head office has expertise in the design and approval of water treatment systems.

### **3.2.3 Drinking Water Program Management Branch**

The Drinking Water Program Management Branch has overall responsibility for policy and program development and drinking water information management. Key provincial drinking water databases are maintained by the branch and are supported by a drinking water registration centre. These databases contain drinking water quality information and system contact information.

### **3.2.4 Education and Outreach Branch**

The Education and Outreach Branch Providing drinking water education and outreach to the Ministry and its stakeholders, supporting operator certification and training, and providing business services and project management support to the division. During an emergency these services would be available for the preparation of media advisories, news releases, backgrounders, fact sheets, and question-and-answer packages.

### **3.2.5 Role of Other MOE Divisions**

The Drinking Water Management Division relies on a cooperative approach with other Ministry divisions and branches for a response to drinking water events including those that may lead to an emergency, as follows:

**Operations Division** has lead responsibility for:

- Spills Action Centre receives adverse water quality incident notifications and engages appropriate staff on a 24/7 basis; and
- MOE's Emergency Response Program for response to certain after-hours drinking water events.

More specific details of SAC's participation and the Operations Division's district and regional response related to environmental emergencies and drinking water emergencies are outlined in Section 3.1 of this Plan.

**Environmental Sciences and Standards Division (ESSD)** has lead responsibility for:

- Testing laboratory licensing and lab inspections;
- Drinking water standards;
- Drinking water sample testing;

- Groundwater monitoring and reporting; and
- Water well and surface water management.

### **3.2.6 Involvement of Local Health Units**

For drinking water emergencies MOE's response capability has to be combined with the requirements for MOE to work in close cooperation with the applicable local Medical Officers of Health. Local Medical Officers of Health have the mandate for health hazard and health risk assessment, and the authority to issue "Boil Water Advisories" or "Boil Water Orders", as necessary. These emergency instruments address immediate quality issues without isolating the supply, and these instruments may be essential where it is necessary to bridge the time period between the detection period and the resolution of a drinking water emergency.

## **3.3 OTHER MINISTRY RESOURCES**

The Standards Development Branch could offer expertise in human toxicology, hydrogeology, geosciences, geophysics, and pesticides. With respect to environmental emergencies, including spills and drinking water related emergencies, the Branch may be able to provide toxicological and risk assessment expertise to ecosystem health, more specifically, toxicological advice and diagnostic services on environmental contaminants and pesticides.

The Water Policy Branch manages policy and programs that are related to water resource management encompassing both quality and quantity issues.

The Waste Management Policy Branch is responsible for developing policies, programs, regulations and legislation to ensure sound and effective management of wastes. Waste management issues can arise during a range of emergencies including those involving spills, and human health or animal health emergencies.

The GIF Centre of the Environmental Monitoring and Reporting Branch is able to provide maps of a requested scale and area for emergency response. The maps can show locations of key facilities (nursing homes, hospitals, schools etc.) and sensitive environmental areas (e.g., wetlands) within various radii (or buffers) of an emergency. The maps can also provide information on routes to the emergency. Some of MOE's Regional Offices may also be able to provide similar support.

The Ministry's Communications Branch manages the communication needs for the Ministry and provides professional communications support during emergencies. The Minister has designated an Emergency Information Officer to act as the primary media and public contact for the Ministry in an emergency, and Annex C outlines details related to the topics of alerting the public and public information (also note Sections 2.8 and 4.4).

During a multidimensional emergency that requires a response under this Plan and a response under the MOE's Continuity of Operations Plan, the Operations Division and the Corporate Management Division will work jointly and in conjunction with other Ministry divisions, as required, to ensure that the critical Ministry services and functions are maintained.

## **4 - MOE'S EMERGENCY RESPONSE STRUCTURE**

This Chapter establishes the basic composition and structure of MOE's response to emergencies. Ontario Regulation 380/04 specifies that every ministry must have an **Emergency Operations Centre (EOC)** and a **Ministry Action Group (MAG)**. The MAG is given the responsibility for directing the ministry's overall and strategic response to an emergency from the ministry's EOC. MOE may also need to rely on the support of a **Regional Action Group (RAG)** to address issues of an operational nature at the regional or district level and to take advantage of MOE's regional or district capabilities and expertise relevant to the emergency or event where this is of assistance to the response required of the Ministry.

Chapter 4 provides an overview of the MOE Emergency Operations Centre, and describes the composition, function and activation of the Ministry Action Group and a Regional Action Group, as well as the relationship between the two groups.

### **4.1 EMERGENCY OPERATIONS CENTRE - EOC**

The MOE Emergency Operations Centre (EOC) is the central facility or headquarters available to the Ministry's senior-level decision-making group, the Ministry Action Group or MAG. The MOE-MAG (see Section 4.2) provides Ministry-wide and strategic coordination, direction and support for emergencies or near-emergency events that require the participation of MOE at the corporate level.

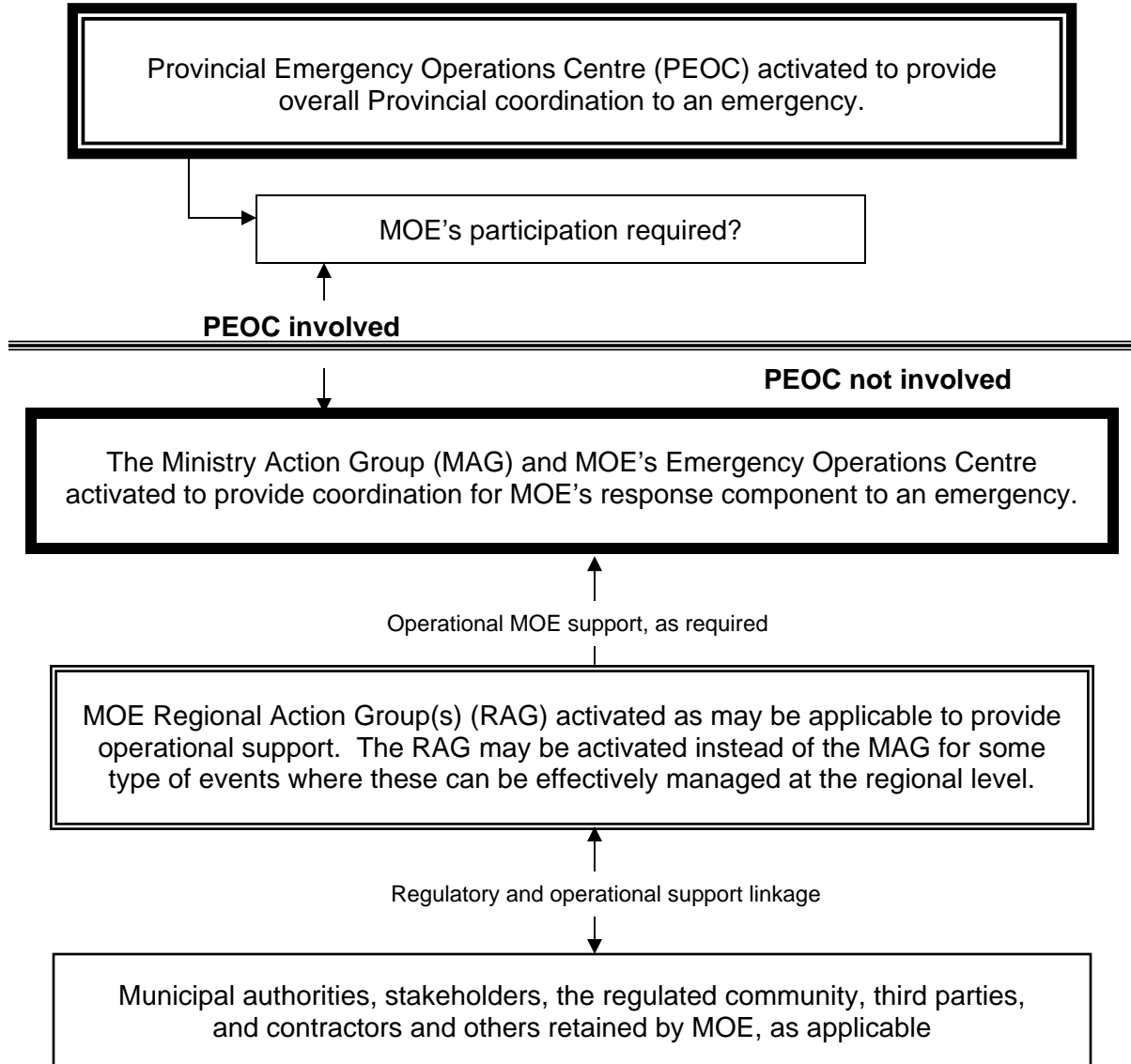
MOE's Emergency Operations Centre is located in Toronto. The EOC is a state-of-the-art, dedicated and restricted access facility available on a 24/7 basis, and is equipped with telephones (some on dedicated callout-only lines, some on call-in only lines), a dedicated teleconference call-in phone number, maps, directories and various support supplies. The EOC is also supported by back-up power generation.

The MOE Emergency Operations Centre is available to the MOE-MAG for an emergency that requires the Ministry to participate in the response to an emergency as a response partner to a wider Government effort for which the Provincial Emergency Operations Centre (PEOC) is activated. The MAG may also make use of the EOC for emergencies and other events for which the PEOC is not activated.

The linkage between the Provincial Emergency Operations Centre (PEOC), MOE's Emergency Operations Centre (EOC) and the complexity of MOE's response to an emergency is a function of the event. Schematic 1 on page 15 and Schematic 2 on the next page illustrate the linkage between the PEOC and MOE's EOC within the MOE's emergency response framework developed under this Plan; also note Schematic 3 on page 40 and Section 4.2, both in Chapter 4.

**SCHEMATIC 2**

**PEOC - MOE-EOC LINKAGE**



**4.1.1 Operations Cycle**

During an emergency or any other event for which this Plan is activated, members of the Ministry Action Group (see Section 4.2) will meet at regular intervals to inform each other of actions taken and difficulties encountered. Meetings will take place at the MOE Emergency Operations Centre or, as applicable, via teleconference. The

MAG Executive Lead will establish the frequency of meetings and agenda items. Meetings will be kept as brief as possible, thus allowing members to carry out their individual responsibilities. Maps and status boards, as applicable, will be displayed and kept up to date by the Operations Officer of the MAG; see Section 4.2.3.

## **4.2 Ministry Action Group - MAG**

The MOE Ministry Action Group (MAG) is established as a requirement of Regulation 380/04 and serves as the senior-level decision-making group activated to facilitate MOE's contribution to an inter-agency response coordinated through the Provincial Emergency Operations Centre (PEOC). Such emergencies are most likely those that fall within the framework of the Provincial Emergency Response Plan, or the Province of Ontario Nuclear Emergency Response Plan. Other Government-wide emergency response mechanisms may also require the activation of the PEOC, and the activation of the MOE-MAG if the particular emergency for which the PEOC is activated requires MOE's formal participation.

The MOE Ministry Action Group may also be activated to coordinate a Ministry response to a spill or drinking water emergency of a magnitude where the Ministry must intervene and where that intervention requires a Ministry-wide response. Such a response may be required even though the PEOC is not activated. The broad response coordination of the MOE Ministry Action Group may be supported, as required and as may be applicable, by the Regional Action Group(s) (addressed in Section 4.3), representing the MOE Region(s) involved or impacted or where MOE has regional or district resources or expertise required for the response.

In addition, components of the MAG may be called upon to support MOE's continuity of operations for events, most likely widespread, that require a strategic or Ministry-wide response under the MOE Continuity of Operations Plan, see Annex J.

The MAG may also be activated, as required, to provide a broad and strategic overview for the environmental issues within MOE's mandate to events that fall within the spectrum of the Memoranda of Understanding, inter-agency undertakings or formal contingency plans listed in the main Plan or its Annexes.

In order for the MOE-MAG to serve effectively as the Ministry's focal point for MOE's response component of the emergency, it is imperative that once activated the MAG be made fully aware of all Ministry activities related to the emergency and that all relevant decisions be funneled through the MAG.

The basic composition of the MOE-MAG consists of members as outlined in Sub-section 4.2.1 and may be adjusted as necessary. The MAG composition for certain scenario-specific events is outlined in Annexes to this Plan and focuses on specific MOE's resources and expertise. The circumstances at the time of any event may require adjustments to the MAG composition and leadership.

All members of the MAG and their alternates are responsible to maintain a log that details requests received, decisions made, instructions issued and actions taken. These logs become part of the incident log maintained by the Duty Officer.

#### **4.2.1 MAG Composition**

The basic composition of the MOE-MAG is illustrated in the table below:

<b>Ministry Action Group</b>	
<b>Executive Lead / Chair</b> - Deputy Minister or designated ADM *	
<b>Designated and Appointed Members</b>	
Assistant Deputy Minister - Operations Division	
Assistant Deputy Minister - Drinking Water Management Division	
Assistant Deputy Minister - Corporate Management Division	
Emergency Management Director (Director Operations Integration / SAC)	
Director, Safe Drinking Water Branch	
Continuity of Operations Director (Director Human Resources Branch)	
Director, Communications Branch	
Emergency Management Program Coordinator	
Manager, Business Continuity and Safety	
<b>Additional Members</b>	
Regional Director(s) for the MOE Region(s) involved **	
Operations Officer	
Duty Officer - event logging	
Financial Officer	
Legal Services Branch Representative	
Senior level representatives from other divisions/ branches, as required - - Environmental Monitoring and Reporting Branch, Laboratory Services Branch, Waste Management Policy Branch, Standards Development Branch, Safe Drinking Water Branch, Drinking Water Program Management Branch, Business and Fiscal Planning, etc.	
Senior-level representatives from other agencies, as required, e.g. OCWA	
Senior-level Support Service Representatives - IT and facilities management	
Support staff - telecommunications, IT, administrative, clerical	
Representative of other assistance (external to MOE) sought by the MAG	

\* - The Deputy Minister may designate one of the Assistant Deputy Ministers (ADM) listed to serve as Executive Lead on the basis of the nature and extent of the emergency; note scenario-specific emergencies, Annex D through Annex K.

\*\* - The Regional Director(s) or alternate(s) of the MOE Region(s) involved will most likely also lead the applicable Regional Action Group(s) and likely communicate with the MAG and the MOE Emergency Operations Centre (EOC) by teleconference. See Section 4.3.

The MOE-MAG would be structured as shown above for emergencies that pose a multiple threat, e.g., a spill emergency that is also a drinking water emergency, or a drinking water emergency that poses a threat to MOE's continuity of operations. The composition of the MOE-MAG for less complex events (e.g., spill emergencies without an actual threat to drinking water supplies) is addressed in specific annexes to this Plan. For example, Annex D and Annex E address spills and drinking water emergencies respectively, and these annexes include the most likely and most practical composition of the MAG for those specific events. Annex F addresses MOE's participation in a Government-wide response to an outbreak of a foreign animal disease, and identifies the composition of MOE's MAG for that type of event.

The MAG may at any time seek the advice and assistance of officials or employees of any ministry and of any other level of government, and representatives of industry and organizations involved in emergency management (Section 3(10), O/R 380/04).

#### **4.2.2 MAG Activation**

The MAG Executive Lead or MAG Chair (Deputy Minister or designated Assistant Deputy Minister) may activate the MAG.

The request to activate the MOE-MAG for an extraordinary event within the framework of an emergency as the term is defined in the *Emergency Management and Civil Protection Act* would normally come from Emergency Management Ontario to MOE through SAC and via the MOE Emergency Management Program Coordinator.

A request to activate the MOE-MAG as a means to deal with a single issue emergency that requires significant and coordinated MOE intervention for the type of events addressed in Annex D through Annex K of this Plan, may come:

- From the Operations Division - Regional Director for the MOE Region(s) impacted by or involved in a spill or spill-related emergency;
- From a Director of the Drinking Water Management Division for drinking water emergency; and
- From a Director of the Corporate Resources Division for a threat to MOE's ability to maintain services - - continuity of operations emergencies.

However, any MAG member may initiate the request to activate the group.

MOE's Emergency Management Program Coordinator is normally involved in the activation of the MOE-MAG and to guide the decision-making processes.

Under the instruction from the Executive Lead, SAC, or others assigned this task at the time of the event, will notify MAG members as required on a 24/7 basis.

The nature and the development of the event may dictate whether the MAG is placed on stand-by or if the MAG should be activated fully.

The MAG Executive Lead (or Chair) may:

- Limit the degree of activation of the MAG and the degree of activation of the Plan (see Section 2.5);
- At any time, limit the timeframe the MAG remains active and choose when the MAG is to stand down (Section 2.7); and
- Where applicable, choose when and if continued involvement in MOE's participation in the response falls to the MOE Regional Action Group (see Section 4.3.)

The normal point of assembly for the MAG is the MOE Emergency Operations Centre in Toronto; note Section 4.1. It is recognized that MAG members may also participate on MAG meetings or meet as a Group via teleconferencing capabilities.

### **4.2.3 Primary Functions of MAG Members**

#### **Executive Lead / Chair**

- Can activate the MOE Emergency Response Plan, any component of the Plan, the Ministry Action Group, and the Regional Action Group(s) (RAG).
- Oversees and coordinates the ministry-wide and strategic decision-making process for an MOE response to a spill or drinking water emergency, or any other event for which the Plan, or any component of the Plan, is activated.
- Serves as the formal linkage to the Minister for the flow of information with respect to activities carried out by staff, and by contractors and others retained or seconded to assist the Ministry for the event.
- Establishes the frequency of MAG meetings and agenda items.
- Appoints the Financial Officer, responsible to track all costs.
- Appoints the Duty Officer, responsible for maintaining the event log.
- May request the participation of any senior-level representative from any of MOE's other divisions or branches on the MAG.
- Approves the selection of advice and assistance from others (internal or external to MOE) sought by the MAG or the RAG, on an as-needed basis, within the intent of Section 3(10) of Regulation 380/04.

#### **Executive Lead Designates**

- The ADM - Operations Division, the ADM - Drinking Water Management Division, and the ADM - Corporate Management Division organize the input of resources and expertise within their respective normal area of responsibility.
- Serve as alternate MAG Executive Lead or Chair, as required.
- May serve as designated Executive Lead for scenario-specific emergencies (see applicable annexes to this Plan, Annex D through Annex K).

#### **Emergency Management Director (Operations Integration/SAC)**

- Directs the input of resources and expertise within the Spills Action Centre and the Emergency Operations Centre.
- Serves as backup to the ADM of the Operations Division.

### **Director, Safe Drinking Water Branch**

- Directs input of resources and expertise related to safe drinking water issues.
- Serves as backup to the ADM of the Drinking Water Management Division.

### **Continuity of Operations Director (Director, Human Resources Branch)**

- Directs the input of resources and expertise related to the continuity of operations and staff occupational health and safety issues, and serves as backup to the ADM of the Corporate Management Division, as required.
- Assigns safety officer, responsible to assess hazardous and unsafe situations and to develop and recommend measures for assuring staff safety.
- Assigns a senior-level support services representative to the MAG, as required.

### **Director, Communications Branch**

- Facilitates all matters related to the communications needs of the Ministry for all emergencies and other events for which this Plan is activated.
- Serves as the primary link with communications contact points of other ministries and agencies for emergencies or events where these entities have lead role responsibilities and have the mandate or are required to coordinate all formal and collective information disseminated to the public and the media.
- Coordinates public alerting in conjunction with MOE's Emergency Information Officer and other involved agencies; note Annex C.

### **Emergency Management Program Coordinator**

- Advises the MAG on procedural response and policy matters for all emergencies where the Ministry is required to support a Provincial response, and for all other events for which this Plan is activated.
- Ensures that requirements of MOE under external commitments mentioned in Section 2.4.4 and those identified in Annex D are accommodated.
- Serves as primary liaison officer for communications regarding tactical matters between MOE and other ministries or agencies involved in the event.
- Arranges for appropriate MOE representation at the Provincial Emergency Operations Centre, when the PEOC is activated, responsible to facilitate an appropriate Ministry input to a wider Government response.
- Responsible for coordinating information required by the PEOC.
- Prepares a debriefing session and a report after the conclusion of response actions under this Plan.

### **Continuity of Operations Manager**

- Advises the Ministry Action Group on matters related to the continuity of MOE's operations where these matters arise or are a component of a response for which this Plan is activated.
- May also be asked to serve in place of the Emergency Management Program Coordinator on the MAG where the Coordinator is required simultaneously at the PEOC over an extended period of time.

### **Regional Director(s)**

- Facilitates and coordinates MOE's Regional or District resources and expertise for the Ministry's operational participation in a response to the type of emergency where MOE's decentralized resources are an integral component of the response for which the MOE Plan is activated.
- Normally also serves as Lead for the Regional Action Group (RAG) for events that require the activation of a RAG (see Section 4.3).
  - The part of Ontario involved in the event for which the MOE Plan is activated determines which MOE Regional Director(s) or alternate serves on the MAG.
  - For events that impact or involve more than one MOE Region, the MAG Executive Lead may request that (any) one MOE Regional Director speaks on behalf of MOE's collective regional interests.

### **Operations Officer**

- Facilitates operational needs within the Emergency Operations Centre and coordinates support activities required by the Centre.
- Organizes all MAG meetings, and serves as the focal point for the linkage between the MAG and the MOE representative on the PEOC.
- With the supported of the Duty Officer, responsible for the overall event log.

### **Duty Officer**

- Appointed by the Executive Lead to assist the Operations Officer in recording and maintaining the event log. The event log tracks all requests received, and all decisions and instructions made. The individual logs of MAG members become part of the event log.

### **Financial Officer**

- Appointed by the Executive Lead to track all costs and expenses related to the emergency or event for which the Plan is activated.

### **Legal Services Branch Representative**

- Provides legal advice to the MAG for all or part of the duration of the emergency or other event for which this Plan is activated.

### **Senior-level Program Representatives**

- The nature of the event for which this Plan is activated will determine which MOE senior-level branch or program specialist suggested in the table of Section 4.2.1 will be required to serve on the MAG.
- The primary function of the Senior-level Program Representatives on the MAG is to assist facilitating and coordinating input to an overall MOE response for their specific area of expertise.

### **Senior-level Support Service Representative**

- Support services for the MAG will be required on an on-going basis for the duration of the emergency or other event for which the MAG is activated.

This includes IT support, possibly on a 24/7 basis, and support for all other matters related to a smooth functioning of the Emergency Operations Centre.

### **Support staff**

- The Ministry Action Group and the Emergency Operations Centre will require support staff, especially for emergencies and other events that require the activation of the MAG over an extended period of time.
- The Continuity of Operations Director together with the Senior Level Support Service Representative will facilitate the provision of telecommunications, IT, administrative and clerical support staff to the MAG and the Emergency Operations Centre from available MOE resources.

## **4.3 Regional Action Group - RAG**

The Regional Action Group (RAG) is created to take full advantage of MOE's expertise within the Ministry's regional structure and is particularly suited for spill emergencies and other spill-related events to which MOE may have to respond. The creation of regional action groups is consistent within the framework of the provisions of Section 3(10) of Ontario Regulation 380/04, which allows the MAG to seek the advice and assistance of officials and employees internal and external to MOE. The availability of a Regional Action Group also provides a mechanism for MOE to respond to events of a magnitude below those of an emergency and for which the activation of the MAG may not be required. For some events the Ministry RAG may act in place of the MAG at the discretion of the MAG Executive Lead.

The Executive Lead of the Ministry Action Group (Deputy Minister or a designated ADM) will activate, as required, a Regional Action Group(s) (RAG) for emergencies that impact or involve the particular MOE Region(s) for which the MAG is activated and where a RAG can provide operational support and regional expertise to the MAG. The MAG Executive Lead may also activate the Regional Action Group(s) for events serious enough to warrant an MOE operational response beyond the district's response capability even if the MAG is not activated fully. Also note Section 2.5.

The RAG may be activated, in whole or in part, to coordinate MOE's operational response where MOE is asked to participate to a response under emergency and contingency plans listed in Section 2.4.4, and undertaking identified in the Annexes.

The RAG may also be activated, as required, to support response efforts under the MOE Continuity of Operations Plan.

The request to activate the RAG would normally come from the MAG Executive Lead. The request may also come from a Regional Director of MOE's Operations Division responsible for the area impacted by or involved in the emergency, or the Director, Safe Drinking Water Branch, which for such eventualities will then be

relayed to the MAG Executive Lead (Deputy Minister, or a designated ADM as noted in the scenario-specific Annexes) for approval.

When the Group is activated, the RAG Lead will assign a person responsible for maintaining an active log that records all key aspects of the event for which the RAG has been activated, in particular requests received, decisions taken, and all communication activities. In addition, all members of the RAG and their alternates are responsible to maintain their individual log that details their decisions, instructions issued and actions taken. Individual logs become part of the event log. If the MAG is activated for the same event the RAG log(s) become part of the overall event log, maintained by the MAG Duty Officer, at the conclusion of the event.

#### **4.3.1 RAG Composition**

The table below illustrates the basic or conceptual composition of an MOE Regional Action Group.

<b>Regional Action Group – Operational Field Response</b>	
<b>Lead / Chair</b> - Regional Director	
<b>Alternate Lead</b> - Assistant Director	
	<b>Members</b> (as required for the type of event addressed)
	District Manager and/or Area Supervisor
	Drinking Water Supervisor
	Technical Support Manager
	Administrative Support Manager
	Assistant Directors Office, Coordinator or Supervisor
	Head office branch(s) representative(s), as required *
	Financial Officer
	Regional Lawyer
	Contract Supervisor
	Regional Communications Officer
	Duty Officer - event logging
	Support staff - telecommunications, IT, clerical/administrative, etc.
	Continuity of Operations Manager **
	Emergency Management Program Coordinator **
	Representatives(s) of external operational assistance retained by MOE

\* - These representatives will likely be linked to the RAG by teleconference.

\*\* - Both representatives are normally members of the Ministry Action Group and available to the RAG, as necessary, by teleconference.

Similar to the rationale outlined for the MAG in Section 4.2, the composition of the RAG may be adjusted, as required in order to deal effectively with the type of event for which Regional Action Groups are activated; see scenario-specific Annexes.

The nature and the development of the event may dictate whether the MOE-RAG is placed on stand-by or if the RAG is activated fully. The normal point of assembly for the RAG is the Regional Office for the involved MOE Region(s). It is recognized that some members of the group may have to participate via teleconference.

### **4.3.2 RAG Activation**

The MAG Executive Lead / Chair, the Deputy Minister or a designated Assistant Deputy Minister, may activate a Regional Action Group(s). A request to activate a RAG(s) may come from the Regional Director of the area impacted or involved (particularly for spill emergencies), or through a request via the MOE Emergency Management Program Coordinator. Such requests require the approval of the MAG Executive Lead (Deputy Minister or a designated ADM). Under the direction of the MAG Executive Lead or a designated ADM, SAC or others assigned this task at the time of the event will notify, or as applicable assist in notifying members of the Regional Action Group on a 24/7 basis, as required.

The nature and the development of the event may dictate whether the RAG is placed on stand-by or if the RAG should be activated fully.

The MAG Executive Lead / Chair (Deputy Minister or a designated ADM) may limit the degree of activation of the RAG and the degree of activation of the Plan (see Section 2.5 of the Plan), the timeframe the RAG remains active, select when and if continued involvement of MOE's participation in the event is delegated to the MOE Regional Action Group, and choose the point in time for a de-escalation of the RAG or for the RAG to stand down (Section 2.7).

The normal point of assembly for the RAG is the applicable Regional Office involved.

It is recognized that some members of the RAG may have to participate on the Group via teleconferencing capabilities.

### **4.3.3 Primary Functions of RAG Members**

#### **Lead / Chair**

- The Regional Director(s) of the MOE Region(s) impacted or affected by the event for which this Plan is activated normally serve as Lead of the RAG.
- Activates the Regional Action Group (as applicable) in order to provide operational support and regional expertise to the MAG.
- Normally represents the Region as a MAG member.

- Serves as the formal link to the Deputy and the Minister for events for which the MAG is not activated or is no longer activated.
- Coordinates MOE operational response to all events for which the RAG is activated, including the flow of information, with respect to activities carried out by staff on behalf of MOE for the event and by contractors and others that may be retained or seconded for the purpose of assisting the Ministry.
- Establishes the frequency of RAG meetings and agenda items.
- Appoints the RAG Financial Officer, responsible to track all relevant costs.
- Appoints the Duty Officer, responsible for maintaining the RAG event log.
- Appoints the Contract Supervisor for events where private sector resources are retained to provide operational support to MOE.

#### **Alternate Lead**

- The Assistant Regional Director(s) of the MOE region impacted or affected by the emergency, or by any other event for which this Plan is implemented, coordinate the input of resources and expertise within their normal respective area of responsibility, and serve as alternate Lead of the RAG.

#### **District Manager / Area Supervisor**

- The District Manager (Area Supervisor, as applicable) coordinates and facilitates the implementation of field activities and regulatory matters, including abatement functions, within their normal area of responsibility that may be associated with an event for which this Plan is activated.

#### **Drinking Water Supervisor**

- Will be required to serve on the Regional Action Group when the emergency or other event for which this Plan is activated involves drinking water issues or threatens drinking water supplies to coordinate and facilitate, as required, the implementation of field activities and regulatory matters within their normal area of responsibility.

#### **Technical Support Manager**

- Coordinates and facilitates the provision of technical information of the MOE Region involved or impacted in the event.

#### **Assistant Director Office, Coordinator or Supervisor**

- Advises the RAG on procedural response and policy matters for all emergencies and all other events for which this Plan is activated.
- Serves as site liaison officer between MOE and any entity with lead role responsibilities or with on-site operational responsibilities where MOE provides assistance or is a response partner. This is especially necessary for events that fall under formal commitments listed in Section 2.4.4.

#### **Head Office Branch Representatives**

- The nature of event for which this Plan is activated will determine which MOE head office branch, program area, or specialist is required to assist the RAG.

- The primary function of the head office branch representatives is to facilitate and coordinate input to an MOE response for their specific area of expertise.

### **Financial Officer**

- Person appointed by the RAG Lead and given the responsibility to track all costs and expenses for the MOE Region(s) related to the emergency or event for which the Plan or any portion of the Plan is activated.

### **Regional Lawyer**

- The RAG may request the MOE Regional Lawyer to participate on the RAG to serve as legal advisor for all or part of the duration of the event.

### **Contract Supervisor**

- Person appointed by the RAG Lead to liaise with and supervise all actions and operational progress of any contractor(s) and/or external expert(s) that may be retained by MOE to provide operational response or support functions to the emergency or event for which the MOE Emergency Response Plan or any portion of the Plan is activated.

### **Regional Communications Officer**

- Facilitates all matters related to the communications needs of the Region.
- All external communications linkage is normally via the MAG Emergency Communications Officer or the Director of MOE's of Communications Branch (note Section 4.2.3 and Annex C).
- Links with the communications contact points of other ministries and agencies for emergencies or events where the MAG has not been activated, or is no longer activated, and where these entities have lead role responsibilities and have the mandate to coordinate all formal and collective information to be released to the public and the media including all news releases.

### **Duty Officer**

- A person appointed by the RAG Lead and made responsible for recording and maintaining up-to-date the RAG log which tracks all decisions and related activities associated with requests, instructions, directions and suggestions made. The individual logs of RAG members become part of the RAG log.

### **Support Staff**

- The Regional Action Group will likely require a number of support staff including, telecommunications, IT, administrative and clerical support staff, for some emergencies and other events that require the activation of the RAG.

### **Continuity of Operations Manager**

- Is available to provide advice the RAG on matters related to the continuity of MOE's operations where these matters arise or threaten to become a component of a response for which this Plan is activated.

- Provides advice on the availability of support staff from available MOE resources.

#### **Emergency Management Program Coordinator**

- Available to advise the RAG on procedural response and policy matters for all events where MOE is required to support a Provincial response to complex emergencies, and for all other events for which this Plan is activated. This may be particularly pertinent for events that fall under formal commitments listed in Section 2.4.4, formal commitments identified in Annex D, and scenario-specific events addressed by Annexes G, H, I or K.

#### **Representative(s) of External Operational Assistance Retained by MOE**

- Representation of external contractor(s) and/or expert(s) seconded, hired or otherwise retained to assist the Ministry with on-site or operational elements of spill or drinking water emergencies or any other event for which the MOE Emergency Response Plan or any portion of the Plan has been activated.

## **4.4 Public Information**

The manner of transmitting news releases and all other forms of official communications with the public, the community and the media is governed by the emergency for which this MOE Plan is activated. For instance, it is a requirement of the Provincial Emergency Response Plan (note Annex G), and the Province of Ontario Nuclear Emergency Response Plan (note Annex H) that ministries participating in a response under these plans channel all external communications through the communications focal point established under those emergency plans. A similar single communications focal point with the media and the community also exists for events to which MOE may be asked to provide response participation under all other emergency or contingency plans identified in this MOE Plan and its Annexes. Conversely, the transmittal of news releases and all other forms of communication with the public, the community and the media will be coordinated by MOE for emergencies or events for which MOE has lead role responsibilities.

The details of MOE's procedures for the dissemination of information to the public as well as procedures for alerting the public (Section 2.7) are provided in Annex C.

The Ministry will work in close cooperation with Emergency Management Ontario with respect to all matters related to the release of information to the public during a response to emergencies for which the Provincial Emergency Operations Centre is activated, and similarly with any other agency or authority with lead role responsibilities for a response to emergencies in which MOE participates.

## **4.5 Conceptual Response Structure - Overview**

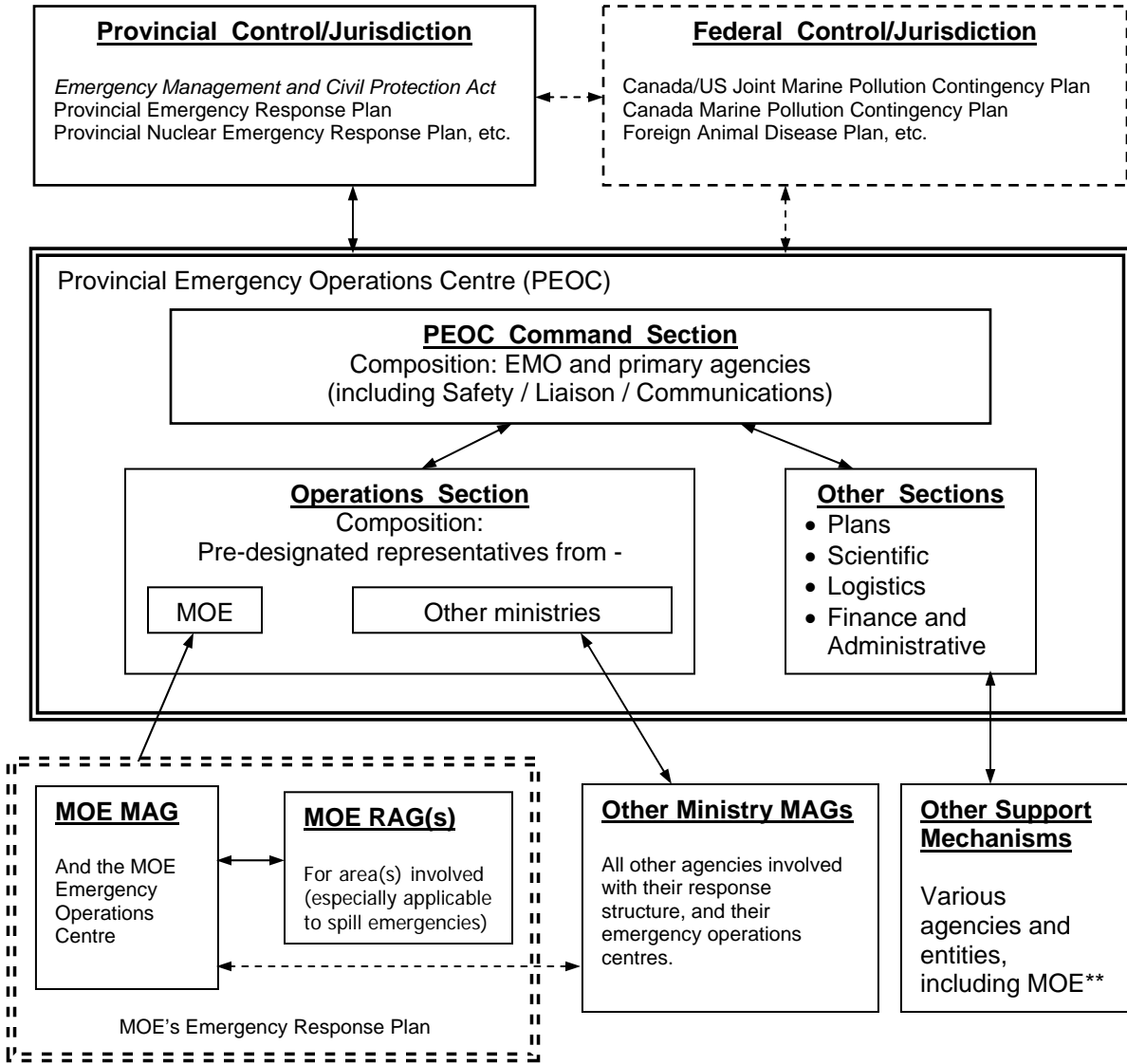
Schematic 3, next page, represents a generic overview of the wider emergency response structure under which MOE may be required to participate. The Schematic represents an essentially generic response structure to an emergency under either provincial or federal jurisdiction for which MOE may provide response participation, together with other Ontario ministries. The primary purpose of the MOE Emergency Response Plan is to support that type of response participation.

The double dotted lines around MOE components of Schematic 3 is intended to illustrate that the MOE Emergency Response Plan can stand alone for a response to an emergency or an urgent event for which a Government response or the PEOC is not activated, but one to which MOE has to respond at a level above the Ministry's normal regulatory role. This includes spill and drinking water events of a magnitude below that of an emergency as the term is defined in the *Emergency Management and Civil Protection Act*. It also includes other events, such as ship-source spills, where MOE becomes a response participant but another agency or entity has lead role responsibilities.

**SCHEMATIC 3**

**CONCEPTUAL EMERGENCY RESPONSE STRUCTURE**

Simplified Overview \*



MAG: Ministry Action Group  
 RAG: Regional Action Group

←————→ Normal lines of communications and flow of information

←-----→ Likely lines of communications and information exchange

\* - Overview of a multi-agency response based on the response structure of the Provincial Emergency Response Plan where the Provincial Emergency Operations Centre is activated.

\*\* - Details for MOE's participation are outlined in applicable Annexes.

As was noted in Sections 4.2 and 4.3, the composition of the Ministry Action Group and Regional Action Groups may be adjusted from that outlined in the main part of the MOE Emergency Response Plan to identify senior decision-makers and other representatives required to deal with the specifics of the type of event for which this Plan or any component of this Plan may be activated.

- **Annex D** consists of response aspects specific to MOE's involvement in a spill emergency and spill-related events, and includes available information on associated regulatory tolls;
- **Annex E** presents details specific to drinking water issues and statutory tools that apply to drinking water emergencies;
- **Annex F** consists of response aspects specific to MOE's involvement in a response to an outbreak of a foreign animal disease and related information and technical considerations;
- **Annex G** addresses MOE's participation in a response under the Provincial Emergency Response Plan;
- **Annex H** details MOE's participation under the Provincial Nuclear Emergency Response Plan and the supplemental plans that focus on related "nuclear" issues;
- **Annex I** focuses on MOE's response structure under the Provincial Coordination Plan for Pandemic Influenza led by the Ministry of Health and Long –Term Care and provides essential information for all Government emergency centres that may be involved;
- **Annex J** speaks to MOE's response support for emergencies other than those addressed by event-specific annexes, Annex D through I;
- **Annex K** includes excerpts from MOE's Continuity of Operations Plan.

The scenario-specific annexes to this MOE Emergency Response Plan are intended to support the main Plan, and the general concepts developed in this Plan apply equally to the annexes.

*This page was intentionally left blank*

# EMERGENCY RESPONSE PLAN

FOR

**SPILL AND DRINKING WATER EMERGENCIES**

AND OTHER

**EMERGENCIES THAT REQUIRE A MINISTRY RESPONSE**

## ANNEXES

<b>ANNEX A</b>	<b>ADMINISTRATIVE ELEMENTS OF THE EMERGENCY RESPONSE PLAN</b>
<b>ANNEX B</b>	<b>RESOURCES DIRECTORY FOR THE MOE EMERGENCY RESPONSE PLAN</b>
<b>ANNEX C</b>	<b>EMERGENCY INFORMATION</b>
<b>ANNEX D</b>	<b>SPILLS TO THE NATURAL ENVIRONMENT - RESPONSE ELEMENTS</b>
<b>ANNEX E</b>	<b>DRINKING WATER EMERGENCIES - RESPONSE ELEMENTS</b>
<b>ANNEX F</b>	<b>FOREIGN ANIMAL DISEASE - SPECIFIC RESPONSE ASPECTS</b>
<b>ANNEX G</b>	<b>MOE'S SUPPORT - PROV. EMERGENCY RESPONSE PLAN</b>
<b>ANNEX H</b>	<b>MOE'S SUPPORT - PROV. NUCLEAR EMERGENCY RESPONSE PLAN</b>
<b>ANNEX I</b>	<b>MOE'S SUPPORT - PROV. COORDINATION PLAN FOR PANDEMIC INFLUENZA</b>
<b>ANNEX J</b>	<b>MOE'S RESPONSE SUPPORT FOR OTHER EMERGENCIES</b>
<b>ANNEX K</b>	<b>MOE'S CONTINUITY OF OPERATIONS - KEY COMPONENTS</b>

**ANNEXES ARE COMPILED AS SEPARATE DOCUMENTS**

*This page was intentionally left blank*

**FOR FURTHER INFORMATION RELATED TO THE  
MINISTRY OF ENVIRONMENT EMERGENCY RESPONSE PLAN**

**PLEASE CONTACT THE MINISTRY'S:**

**EMERGENCY MANAGEMENT PROGRAM COORDINATOR  
416-325-1995**